

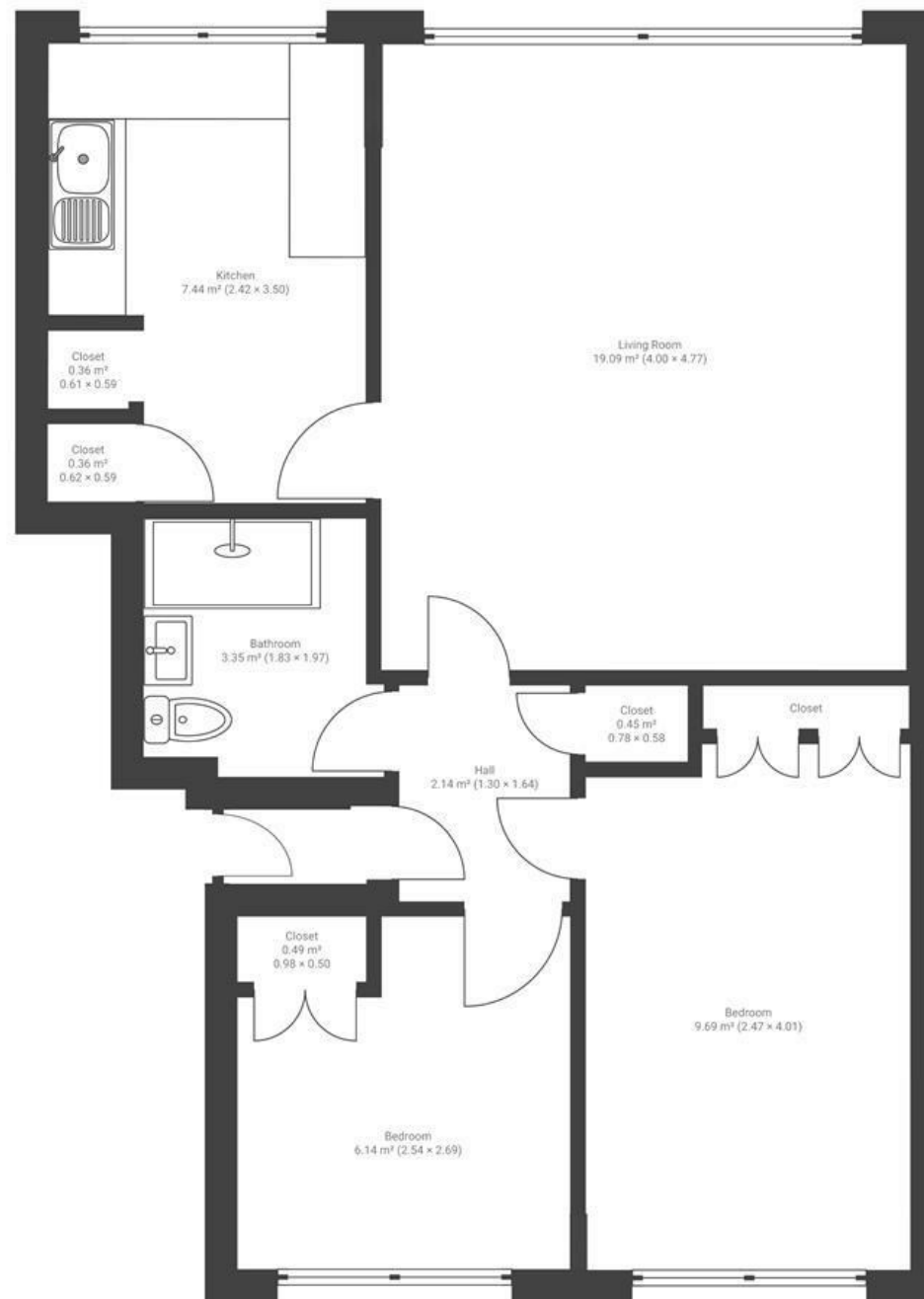
Howecroft

STOKE BISHOP

APPROXIMATE FLOOR AREA
50 SQM / 538 SQFT



FIRST FLOOR



Boardwalk

Eastmead Lane

STOKE BISHOP, BRISTOL



£200,000



2 Bedrooms



BS9 1HJ



1 Bathrooms

Living in Stoke Bishop is really the best of both worlds. It's as quiet and tranquil as the countryside, with greenery and open spaces all around. Travel just a mile however and you are able to enjoy the buzz of Clifton.

Service Charge TBC

